

SCHLOW LIBRARY FOUNDATION

TURN THE PAGE

a newsletter for library friends like you



[Winter 2024]

What a year it has been!

As a new year begins and we take a moment to reflect on the year that was, we want to acknowledge and thank you for your generous support and donations.

You are funding our future and creating possibilities in the community. We couldn't do it without you!

Thank you for your support this past fall/winter during the "**Funding our Future Together**" campaign.



We put your donations to work in ways big and small to bring you new opportunities to read, learn, and connect with your community.

Thanks to your support, Schlow Library is a place where everyone is both welcome and free to experience, explore, and learn about the world and themselves. You have ensured open access to information for all - because we did this **TOGETHER!**

Your Support Brings the Community Together:

Frost Fest

On Saturday, December 9, Schlow Library was transformed into a frosty fantasyland. Patrons of all ages were invited to participate in a life-sized winter board game, go ice fishing, decorate snowman cookies, and play Jenga with giant blocks of ice.

Rounding out the day were fun-filled winter storytimes for children and a reading of some chilling winter tales for teens and adults. A keepsake photograph in a decoratable frame was available to all who posed under the ice arch, helping to freeze this year's Frost Fest memories in minds until more can be made next year.



Stonebridge Winds Family Concert

On Saturday, November 4, Schlow was proud to host a concert for families by Stonebridge Winds. An ensemble of flute, oboe, clarinet, horn, and bassoon, Stonebridge Winds is composed of music faculty from the region's universities and members of the area's professional orchestras. The Music Performance Trust Fund co-sponsored this program, funded by recording companies supporting live performances. Approximately 30 children attended the concert, which included a special musical highlight of the popular picture book *Mother Bruce*!

Manga Day

Manga once again took over the teen space in October for Manga Day. This year's event featured a Kit-Kat taste test, a talk from a manga translator, a cosplay panel, and lots of different crafts. The event coincided with a read it/watch it of *Spy X Family* by Tatsuya Endo.

Wondering what manga is? Manga is an animation style that originated in Japan and is primarily used in comics and graphic novels, although it is used in cartooning as well.



Presenting Indie Authors @ the Mic!

On Sunday, November 5, several talented local authors took over the Quiet Area on the second floor to read aloud for 10 minutes from their selected works. Poetry, nonfiction, thriller, and mystery readings were shared with 20 adults who enjoyed snacks and drinks from Webster's Bookstore & Cafe. Audience members could also purchase a copy and get it signed by the author. Participating local authors included Lee Peterson, Camille-Yvette Welsch, Terry Watson, Carline Crevecoeur, J.L. Delozier, Mary Rohrer-Dann, Laura Irwin, and Drey Kharem.

1:1 Technology Help

With decades of experience, Schlow Library provides free technology advice and support to both patrons and community organizations on a wide variety of topics.

Drop by Schlow Library's new Community Tech Help Desk in our cozy 2nd Floor Musser Room:

Tuesdays: 4-6pm

Wednesdays: 9-11am

Fridays: 10:30am-12:30pm

[Schedule](#)



Drop-in times not convenient?

Find a time to schedule a 30 minute, 1-on-1 session with a Schlow staff member. Please call 814.237.6236 or email refdesk@schlowlibrary.org to schedule your appointment.

What is the Schlow Library Foundation?



The Schlow Library Foundation (formerly known as the Friends of Schlow Library) provides crucial funding support for the programs and services at Schlow Library. This support is made possible by donations of all sizes to the Foundation from community members.

This also includes important advocacy, financial investment, and volunteer support for the Library, with an eye toward a sustainable future.

The Foundation is working to ensure that the Library services you cherish will continue without interruption through fundraising projects and outreach programs.

In short, **FRIENDS** are The Foundation...**YOU** are The Foundation!

Foundation Volunteer Spotlight



Maureen Welesko, President
Schlow Library Foundation

What are your favorite things about Schlow Library?

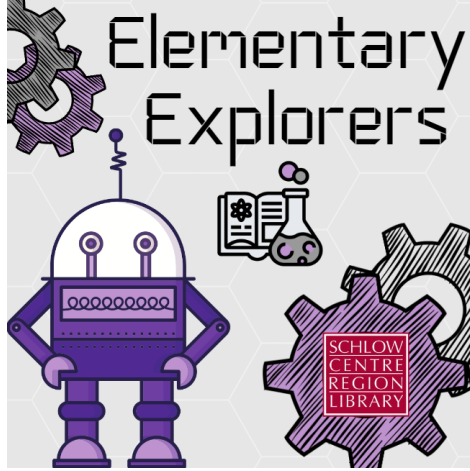
I love the friendly staff and all the programs and materials available to patrons. The Children's Department is one of the best Children's Departments EVER, in my opinion.

Why do you volunteer and donate to Schlow Library?

I believe that Schlow Library is the living room of State College and I want to help in any way to maintain the "living room" for generations to come!!

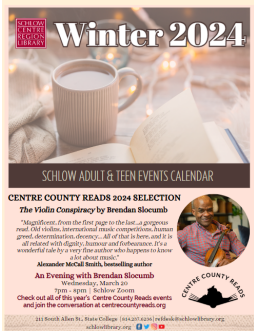
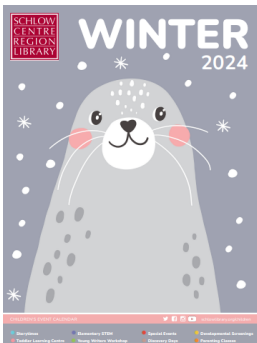


Upcoming Events





Event Calendars



[Children's Event Calendar](#)

[Adult & Teen Events Calendar](#)

[Author Talks](#)



**None of this would be possible
without your support.**

THANK YOU!

**Schlow Centre
Region Library**

[814.237.6236](tel:814.237.6236)

211 S Allen St
State College, PA 16801
schlowlibrary.org

[Get Directions](#)



Hours

MON 9am to 8pm
TUE 9am to 8pm
WED 9am to 8pm
THU Noon to 8pm
FRI 9am to 6pm
SAT 9am to 5pm

[Manage](#) your preferences | [Opt Out](#) using TrueRemove™
Got this as a forward? [Sign up](#) to receive our future emails.
View this email [online](#).

211 S. Allen Street | State College, PA 16801 US

This email was sent to .
To continue receiving our emails, add us to your address book.

emma

[Subscribe](#) to our email list.